

TM 345 Marine Transmission

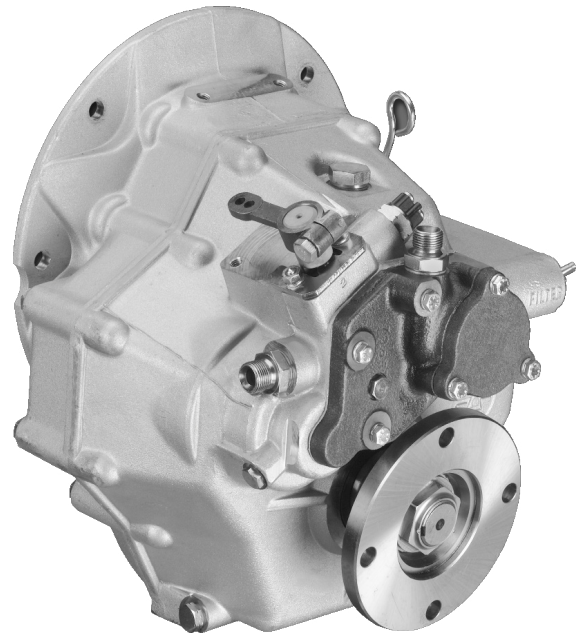
Maximum 110 kW (148 hp)



The Technodrive TM 345 marine transmission features a durable aluminum alloy housing and hydraulically operated multi-disc clutches. The clutches and gears are engineered to handle full engine power in both forward and reverse.

SPECIFICATIONS

- SAE 3, SAE 4 bell housings
- 6.5" - 7.5" torsional couplings
- Cable bracket
- Heat exchanger kit
- Trolling valve
- Propeller shaft flange



TECHNICAL DATA

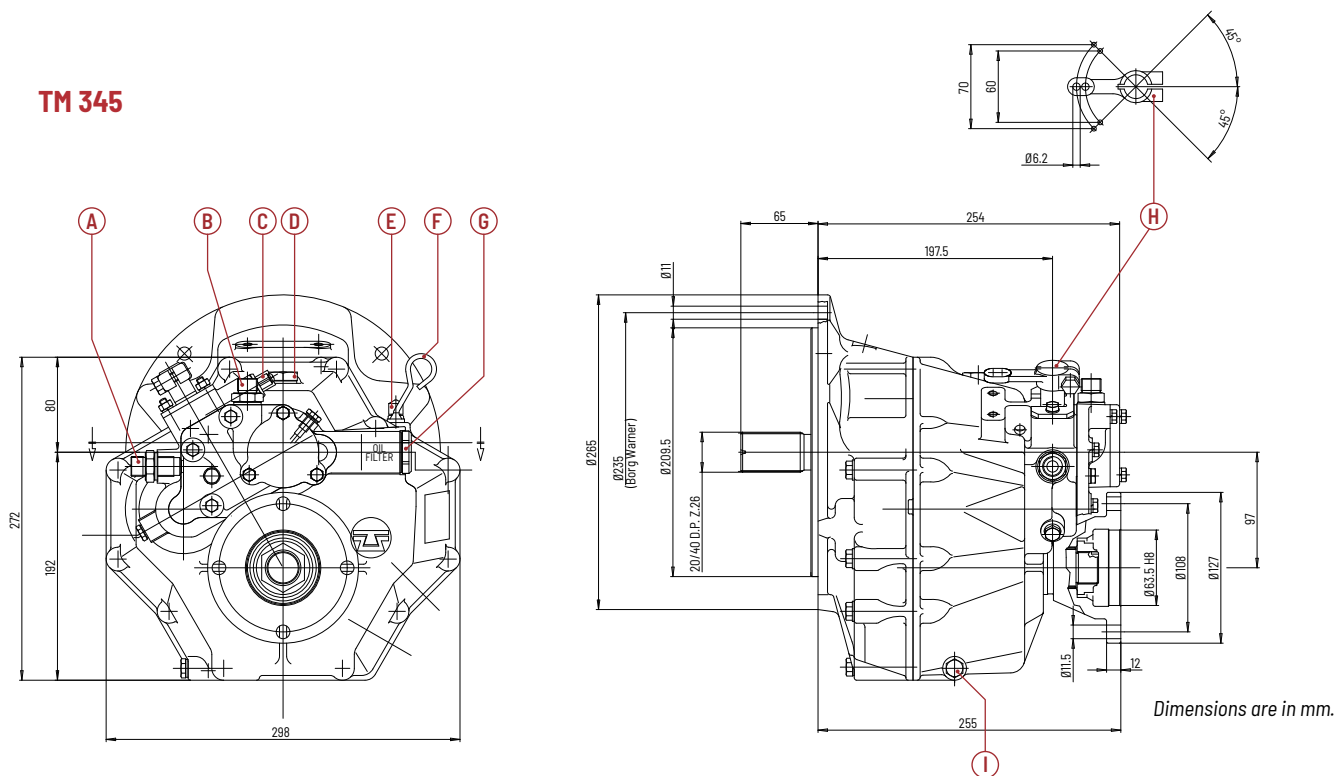
Ratio	Input Ratings kW (hp)					
	Pleasure		Intermediate		Continuous	
	2600 rpm	3200 rpm	2100 rpm	2500 rpm	1800 rpm	2400 rpm
1.54	94 (126)	110 (148)	47 (63)	56 (75)	35 (47)	47 (63)
2.00	76 (102)	94 (126)				
2.47	57 (76)	70 (94)	35 (47)	42 (56)	26 (35)	35 (47)

TORSIONAL RESPONSIBILITY

Disregarding propulsion system torsional compatibility could cause damage to components in the drive train resulting in loss of mobility. At minimum, system incompatibility could result in gear clatter at low speeds.

The responsibility for ensuring that the torsional compatibility of the propulsion system is satisfactory rests with the assembler of the drive and driven equipment.

TM 345



A Oil from cooler **B** Oil to cooler **C** Neutral indicator **D** Oil Filler Cap **E** Vent **F** Dipstick **G** Oil filter **H** Actuating lever **I** Drain plug

Max. Engine Speed	Dry Weight	Oil Quantity
4500 rpm	25 kg (55 lbs)	1.60 L (0.42 gal)

USA • AUSTRALIA • BELGIUM • CANADA • CHINA • FINLAND • INDIA
ITALY • NETHERLANDS • NEW ZEALAND • SINGAPORE • SWITZERLAND

Twin Disc, Incorporated reminds users of these products that their safe operation depends on use in compliance with engineering information provided in our catalog. Users are also reminded that safe operation depends on proper installation, operation and routine maintenance and inspection under prevailing conditions. It is the responsibility of users (and not Twin Disc, Incorporated) to provide and install guards or safety devices which may be required by recognized safety standards or by the Occupational Safety and Health Act of 1970 and its subsequent provisions.